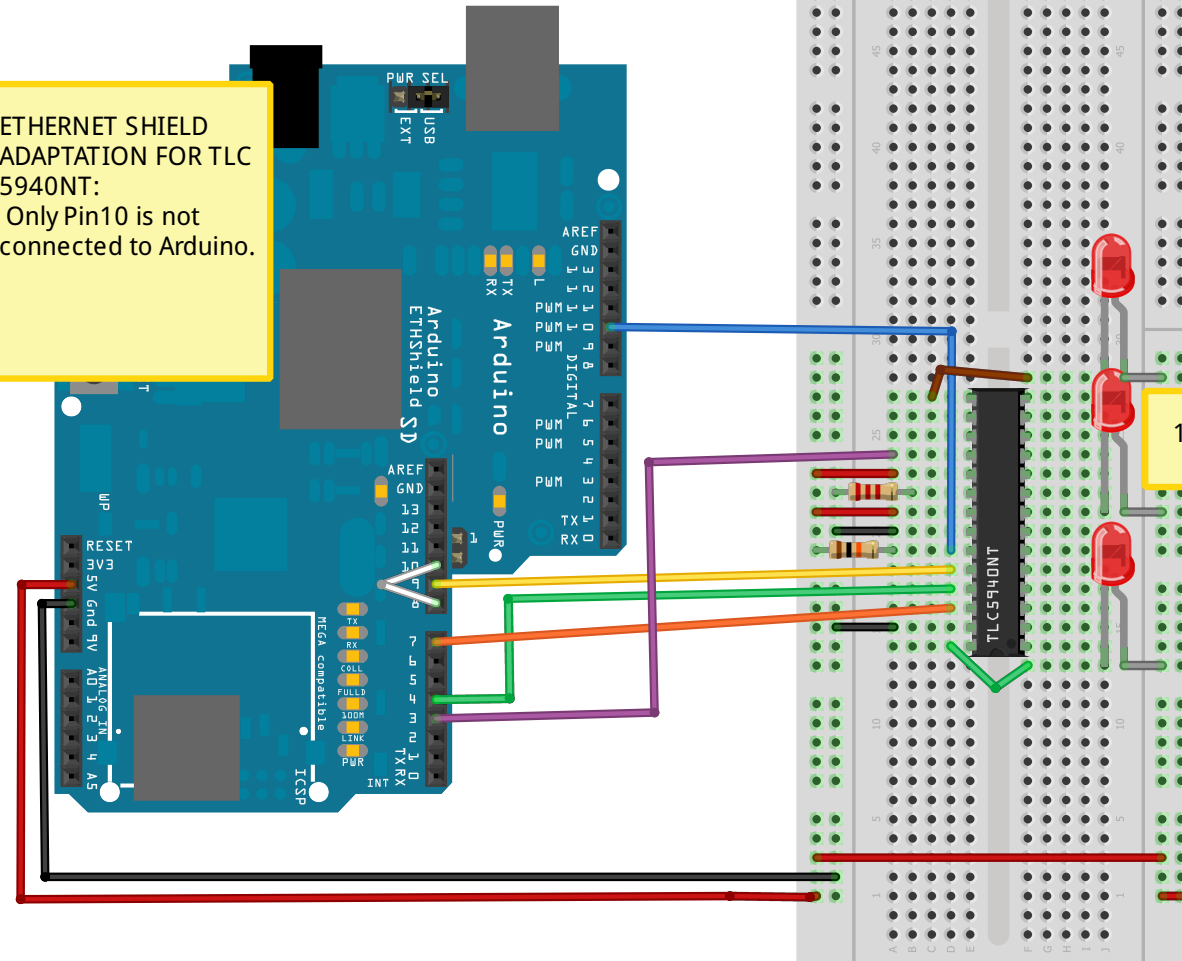


Adaptation:
BLANK -> PB2 (D10)
XLAT -> PB1 (D9)
SIN -> PD7 (D7)
XERR -> PD6 (D6)
SCLK -> PD4 (D4)
GCLK -> PD3 (D3)

Ponter dans l'ethernet
shield:
D10 -> D8

ETHERNET SHIELD
ADAPTATION FOR TLC
5940NT:
Only Pin10 is not
connected to Arduino.



14 LEDS

